

48, 54 and 60-Inch HP Power Flow™ Chute Kits

BM21681, BM21682



JOHN DEERE

INSTALLATION INSTRUCTIONS

48, 54 and 60-Inch HP Power Flow™ Chute Kits

M153507 22JUL19 (ENGLISH)

LT, LX, GT, GX, SST, Select Series™, EZtrak™ Series,
Mowers, Ztrak™ Series, and X700™ Series Tractors

John Deere Horicon Works
M153507 (22JUL19)

PRINTED IN U.S.A.
COPYRIGHT © 2019
DEERE & COMPANY
Moline, Illinois

All rights reserved.
A John Deere ILLUSTRATION™ Manual
Previous Editions
Copyright © 2014, 2015

M153507-19-22JUL19

Parts In Kit

7-Bushel HP Power Flow™ Chute

Quantity	Description
1	Chute Assembly

14-Bushel HP Power Flow™ Chute

Quantity	Description
1	Chute
1	Locknut, #10-24
1	Strap With Hook
1	Screw, 3/16 x 1-1/4 in.
2	Washer, 7/32 x 1/2 x 3/64 in.

MC519 Cart HP Power Flow™ Chute

Quantity	Description
1	Chute
1	Locknut, #10-24
1	Strap With Hook
1	Screw, 3/16 x 1-1/4 in.
2	Washer, 7/32 x 1/2 x 3/64 in.

NOTE: Retain these installation instructions with your machine operator's manual.

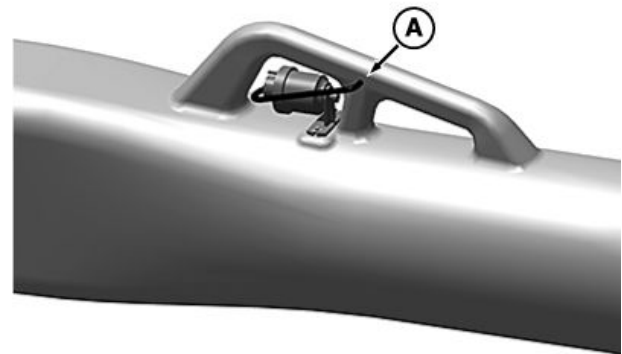
OUMX068,0000A75 -19-12NOV14-1/1

Assemble Kit

Install Indicator Hose

1. Insert rubber hose into the hole (A) in the side of chute as shown.
2. Squeeze and rotate hose to aid installation. Wetting hose with water is also helpful to aid installation.

A—Chute Hole

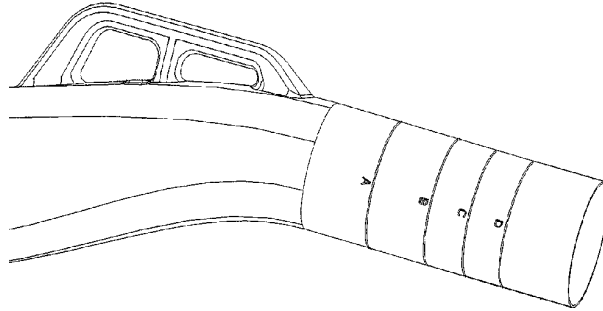


MX100548 —UN—29MAY19

OUO2004,0000CEC -19-29MAY19-1/1

Cut Chute

1. Determine your model of tractor, mower deck, and bagging system. Use the appropriate table for the correct chute cut line (A, B, C, D, E, or F). Locate the appropriate cut line molded into the chute.
2. To provide a straight guideline for cutting, apply several layers of tape around the chute on the edge of the correct cut line.
3. Cut the chute.
4. To remove any burrs, file the cut edge.



MXT012554 —UN—12NOV14

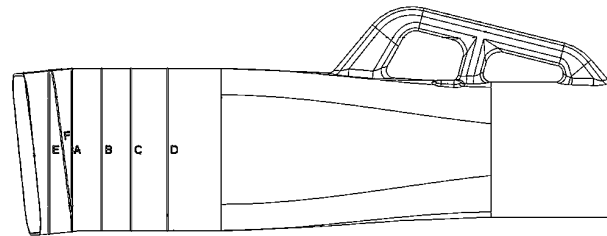
7-Bushel HP Power Flow™ Chute

Tractor	Mower Deck	Cut Mark
LT	48	A
LX	48	C
	54	C
GT and GX	48	B
	54	B
SST™	48	C
	54	D
X300 Select Series' (2006-)	48	C
	54	C
X465, X475, X485, X495, X575, X585, X595	48	Do Not Cut
	54	Do Not Cut
X500 Select Series (2006-)	48	C
	54	C
X700's	48	Do Not Cut
	54, 54HC	Do Not Cut
	60HC	Do Not Cut
EZtrak and Ztrak	48, 48HC	Do Not Cut
	54, 54HC	Do Not Cut

OUO2004,0000CEB -19-22JUL19-1/5

14-Bushel HP Power Flow™ Chute

Tractor	Mower Deck	Cut Mark
GT and GX	48	D
	54	C
X500 Select Series (2006-)	48	B
	54	A
X465, X475, X485, X495, X575, X585, X595	48	A
	54	E
	62	Do Not Cut
X700's	48	A
	54	E
	62	Do Not Cut
	54HC	F
	60HC	F
	60D (7-Iron™)	A



MXT012555 —UN—12NOV14

NOTE: If "E" line is missing on some chutes, cut 38 mm (1.5 in) from "A" line.

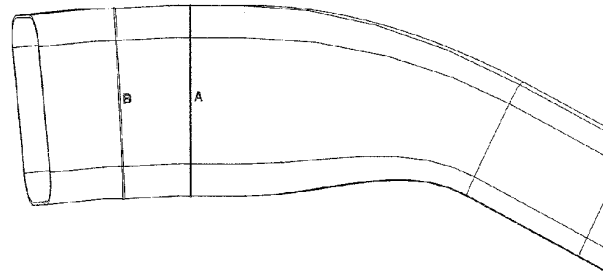
NOTE: If "F" line is not present, utilize "E" line.

Continued on next page

OUO2004,0000CEB -19-22JUL19-2/5

MC519 Cart HP Power Flow™ Chute

Tractor	Mower Deck	Cut Mark
GT and GX	48	A
	54	A
X300 Select Series* (2006-)	48	B
	54	B
X500 Select Series (2006-)	48	B
	54	B
X465, X475, X485, X495, X575, X585, X595	48	A
	54	B
	62	Do Not Cut
X700's	48	A
	54	B
	62	Do Not Cut
	54HC	B
	60HC	Do Not Cut



MXT012556 —UN—12NOV14

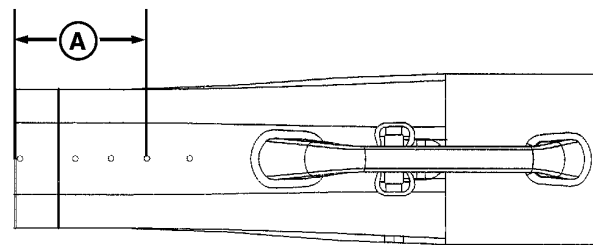
OUO2004,0000CEB -19-22JUL19-3/5

Install Chute Strap

NOTE: Strap is pre-assembled on 7-Bushel HP Power Flow™ chutes and does not require further installation.

1. Measure distance (A) on the top side of chute from the cut line end. Locate the small dimple mark at this location and mark it for drilling.
2. Drill a 5 mm (3/16 in) hole through the dimple mark.

A—Distance 16.5 cm (6.5 in)



Picture Note: 14-Bushel HP Power Flow™ chute shown. MC519 HP Power Flow™ chute is similar.

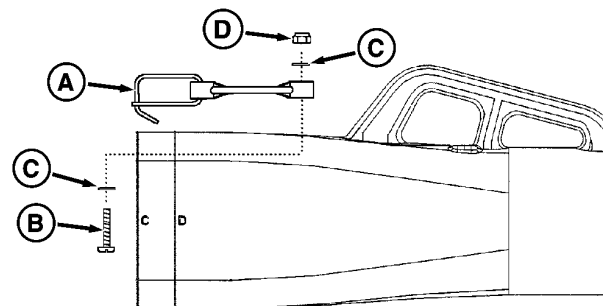
MXT012557 —UN—12NOV14

OUO2004,0000CEB -19-22JUL19-4/5

3. Attach chute strap (A) to top of the chute with screw (B), washers (C), and locknut (D).

A—Chute Strap
B—Screw

C—Washers
D—Locknut



MXT012558 —UN—12NOV14

OUO2004,0000CEB -19-22JUL19-5/5

