

# Front Fender Extension Kit

BLV10895, BLV10896



**JOHN DEERE**

## INSTALLATION INSTRUCTIONS

**LVU34024**

**LVU34024 07NOV17 (ENGLISH)**

**3033R, 3038R, 3039R, 3045R, 3046R, 4044R, 4049R,  
4052R, 4066R Compact Utility Tractors**

**John Deere Augusta Works  
LVU34024 (07NOV17)**

PRINTED IN U.S.A.  
COPYRIGHT © 2017  
DEERE & COMPANY  
Moline, Illinois

All rights reserved.  
A John Deere ILLUSTRATION™ Manual  
Previous Editions  
Copyright © 2015, 2016

LVU34024-19-07NOV17



### Introduction

**IMPORTANT:** Read through this instruction thoroughly and familiarize yourself with the tractor before installing parts.

3039R, 3045R, 3046R, 4044R, 4049R, 4052R, 4066R compact utility tractors.

This installation instruction demonstrates procedure to install the front fender extension kit on 3033R, 3038R,

PS75950,00001BB -19-18SEP17-1/1

### Recognize Safety Information

This is a safety-alert symbol. When you see this symbol on your machine or in this manual, be alert to the potential for personal injury.

Follow recommended precautions and safe operating practices.



T81389—UN—28JUN13

DX,ALERT -19-29SEP98-1/1

### Understand Signal Words

**DANGER;** The signal word DANGER indicates a hazardous situation which, if not avoided, will result in death or serious injury.

**WARNING;** The signal word WARNING indicates a hazardous situation which, if not avoided, could result in death or serious injury.

**CAUTION;** The signal word CAUTION indicates a hazardous situation which, if not avoided, could result in minor or moderate injury. CAUTION may also be used to alert against unsafe practices associated with events which could lead to personal injury.

A signal word—DANGER, WARNING, or CAUTION—is used with the safety-alert symbol. DANGER identifies the most serious hazards. DANGER or WARNING safety signs are located near specific hazards. General



precautions are listed on CAUTION safety signs. CAUTION also calls attention to safety messages in this manual.

TS187—19—30SEP88

DX,SIGNAL -19-05OCT16-1/1

## Follow Safety Instructions

Carefully read all safety messages in this manual and on your machine safety signs. Keep safety signs in good condition. Replace missing or damaged safety signs. Be sure new equipment components and repair parts include the current safety signs. Replacement safety signs are available from your John Deere dealer.

There can be additional safety information contained on parts and components sourced from suppliers that is not reproduced in this operator's manual.

Learn how to operate the machine and how to use controls properly. Do not let anyone operate without instruction.

Keep your machine in proper working condition. Unauthorized modifications to the machine may impair the function and/or safety and affect machine life.



TS201 —UN—15APR13

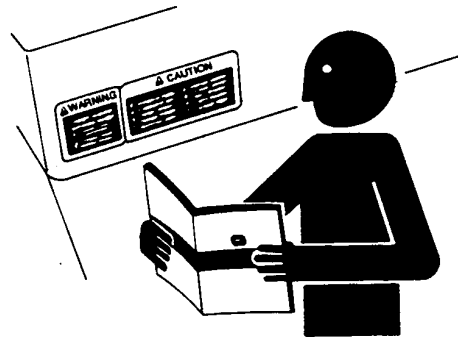
If you do not understand any part of this manual and need assistance, contact your John Deere dealer.

DX,READ -19-16JUN09-1/1

## Replace Safety Signs

Replace missing or damaged safety signs. Use this operator's manual for correct safety sign placement.

There can be additional safety information contained on parts and components sourced from suppliers that is not reproduced in this operator's manual.



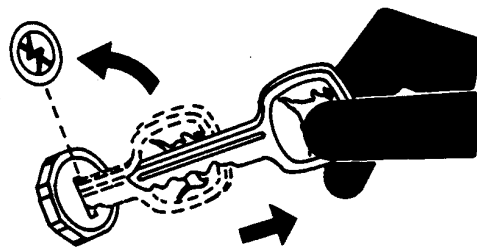
TS201 —UN—15APR13

DX,SIGNS -19-18AUG09-1/1

## Park Machine Safely

Before working on the machine:

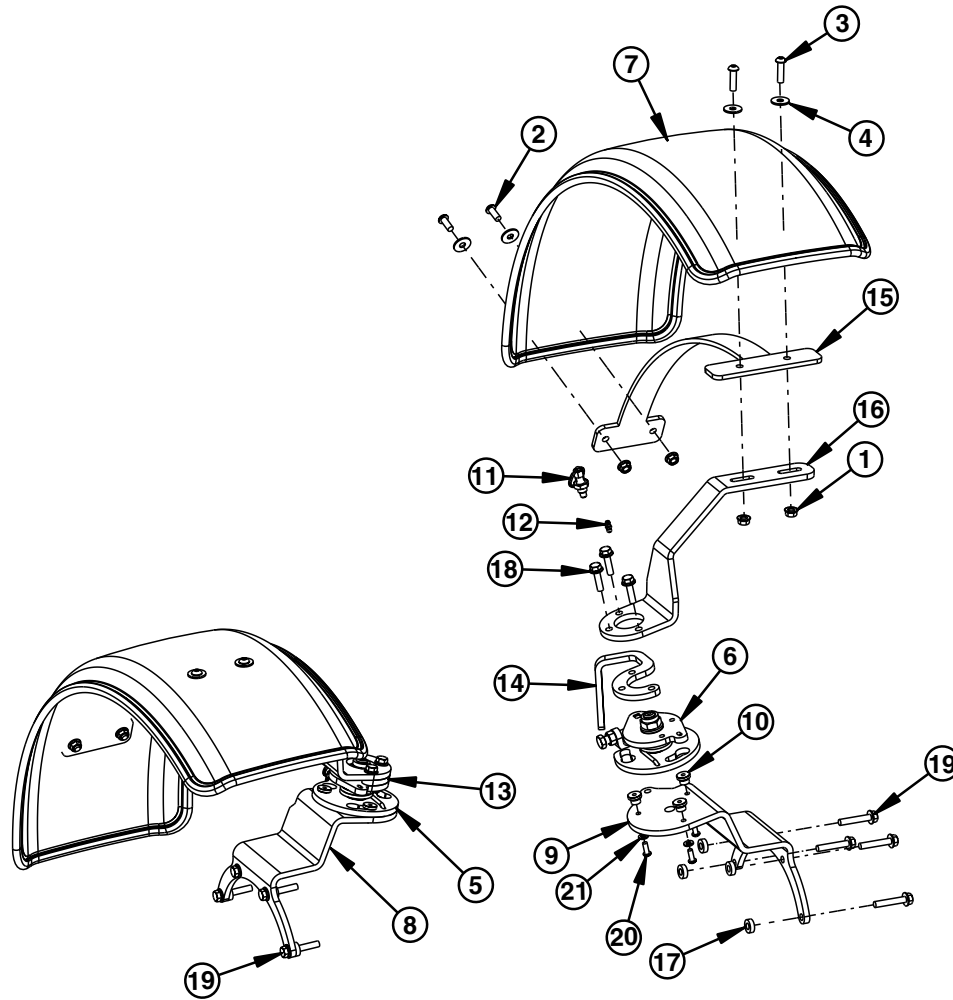
- Lower all equipment to the ground.
- Stop the engine and remove the key.
- Disconnect the battery ground strap.
- Hang a "DO NOT OPERATE" tag in operator station.



TS230 —UN—24MAY89

DX,PARK -19-04JUN90-1/1

**Kit Parts List - BLV10895**



PY46328—UN—20SEP17

Item	Part Number	Description	Quantity
1	14M7298	FLANGE NUT M8	8
2	21M7572	SCREW M8	4
3	21M7642	SCREW M8	4
4	24M7298	WASHER FLAT ID M8.4	8
5	LVA21262	TORSION SPRING RH	1
6	LVA21263	TORSION SPRING LH	1
7	LVA23139	FENDER, FENDER WITH TRIM	2
8	LVU30577	BRACKET KIT, BOTTOM BRACKET RH	1
9	LVU30578	BRACKET KIT, BOTTOM BRACKET LH	1
10	LVU30579	PIN FASTENER	6
11	LVU30580	SPRING PIN	2
12	LVU30581	LUBRICATION FITTING	2
13	LVU30585	BRACKET	1
14	LVU30586	BRACKET	1
15	LVU30589	BRACKET 3R FENDER SUPPORT	2
16	LVU30591	BRACKET KIT LH	2
17	LVU30861	SPACER, FRONT FENDER MOUNT	8
18	19M7868	BOLT	6
19	19M7799	BOLT	8

Continued on next page

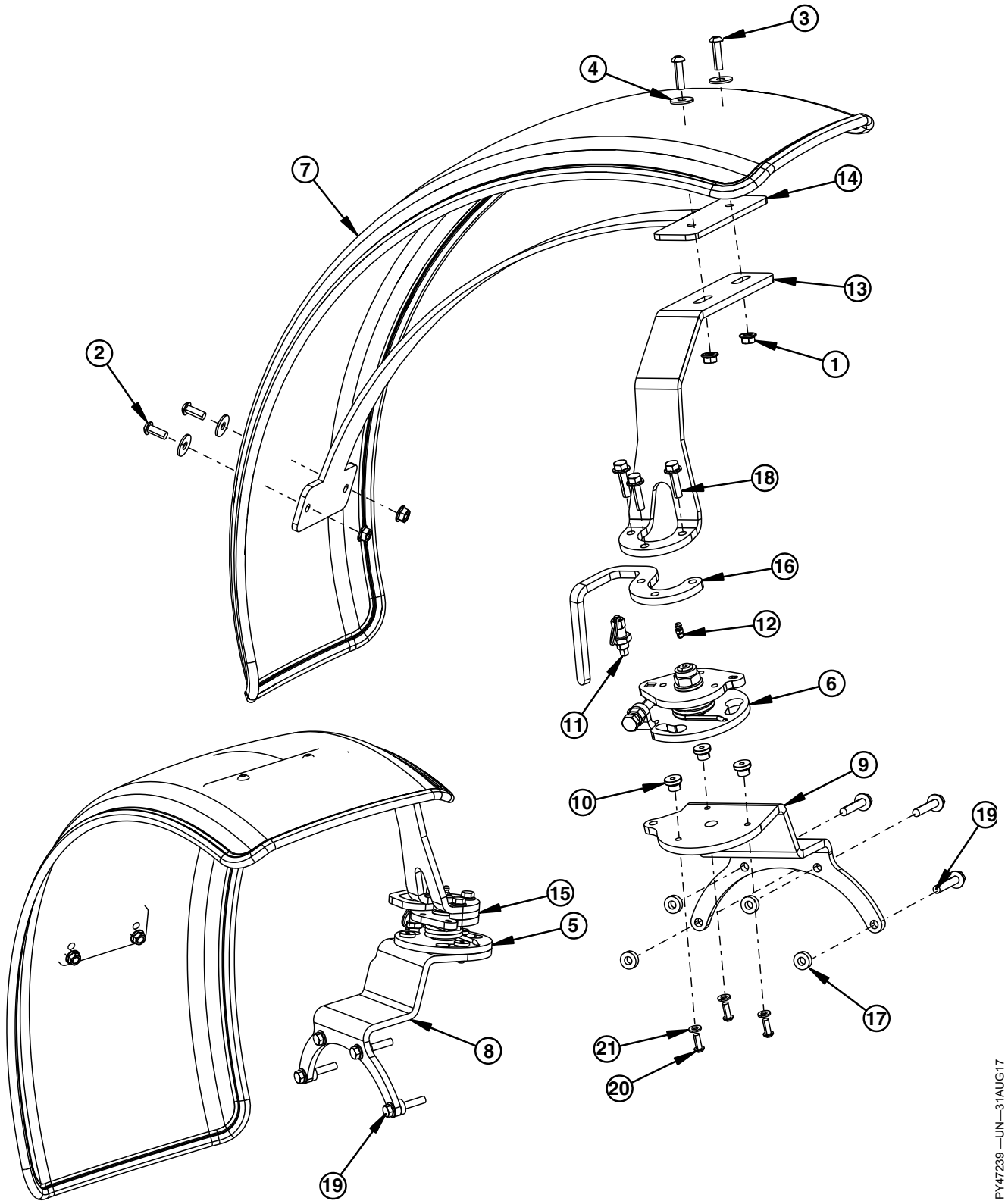
PS75950,00001B7 -19-20SEP17-1/2

BLV10895, BLV10896

Item	Part Number	Description	Quantity
20	21M7577	SCREW	6
21	24M7293	WASHER	6

PS75950,00001B7 -19-20SEP17-2/2

Kit Parts List - BLV10896



Continued on next page

PR59899,00003C5 -19-20SEP17-1/2

PY47239—UN—31AUG17

Item	Part Number	Description	Quantity
1	14M7298	FLANGE NUT M8	8
2	21M7572	SCREW M8	4
3	21M7642	SCREW M8	4
4	24M7298	WASHER FLAT ID M8.4	8
5	LVA21262	TORSION SPRING RH	1
6	LVA21263	TORSION SPRING LH	1
7	LVA23183	FENDER, FENDER WITH TRIM	2
8	LVU30577	BRACKET KIT, BOTTOM BRACKET RH	1
9	LVU30578	BRACKET KIT, BOTTOM BRACKET LH	1
10	LVU30579	PIN FASTENER	6
11	LVU30580	SPRING PIN	2
12	LVU30581	LUBRICATION FITTING	2
13	LVU30583	BRACKET KIT	2
14	LVU30584	BRACKET, FENDER SUPPORT	2
15	LVU30585	BRACKET	1
16	LVU30586	BRACKET	1
17	LVU30861	SPACER, FRONT FENDER MOUNT	8
18	19M7868	BOLT	6
19	19M7799	BOLT	8
20	21M7577	SCREW	6
21	24M7293	WASHER	6

PR59899,00003C5 -19-20SEP17-2/2

### Prepare Machine

1. Park tractor on level surface and engage park brake.
2. Place wheel chocks or wood blocks in front of and behind rear wheels.
3. Lift center of front axle with appropriate lifting device.
4. Place jackstand under front axle.
5. Remove right and left wheel assemblies.

PS75950,00001B8 -19-21AUG17-1/1

### Install Fender Bracket

1. Apply Loctite® 243 to socket-head button screws (A).
2. Use three M6 x 1 x 16 hex socket button screws (A) and three flat washers (B) to install three shoulder pins (C) to the top of bracket. Tighten to specification.

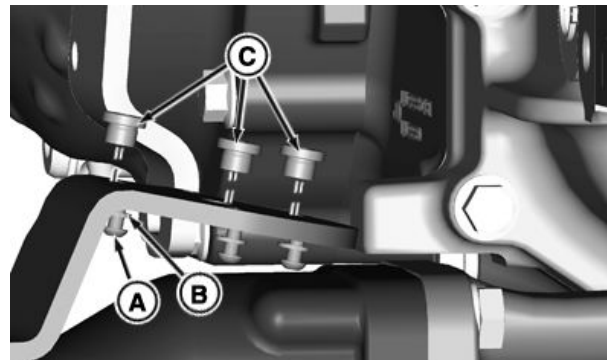
#### Specification

Socket head button screws (A)—Torque..... 10 N·m  
7 lb.-ft.

3. Remove top four existing cap screws from front axle differential case assembly.

**A**—Socket head button screws, **C**—Shoulder Pin  
M6 x 1 x 16  
**B**—Flat washers, I.D. M6.5 x  
O.D. - M13 x 1.6

Loctite is a trademark of Henkel Corporation



LV24105—UN—15SEP15

Continued on next page

PS75950,00001B9 -19-21AUG17-1/5



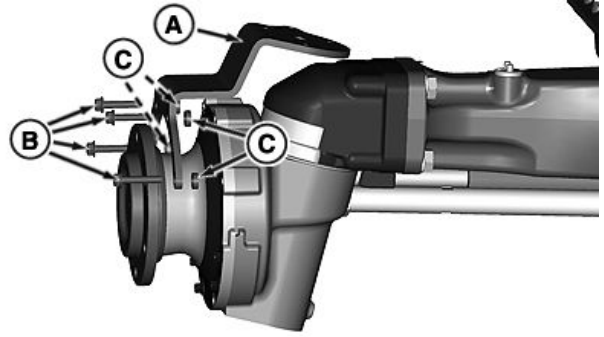
4. Apply Loctite® 243 to cap screws (B).
5. Use four M8 x 1.25 x 45 cap screws (B) and four bushings (C) to install bracket (A). Tighten cap screws to specification.

**Specification**

Cap Screws  
(A)—Torque..... 30 - 38 N·m  
22 - 28 lb.-ft.

**A— Bracket**                               **C— Bushing**  
**B— Cap Screw, M8 x 1.25 x 45**

Loctite is a trademark of Henkel Corporation



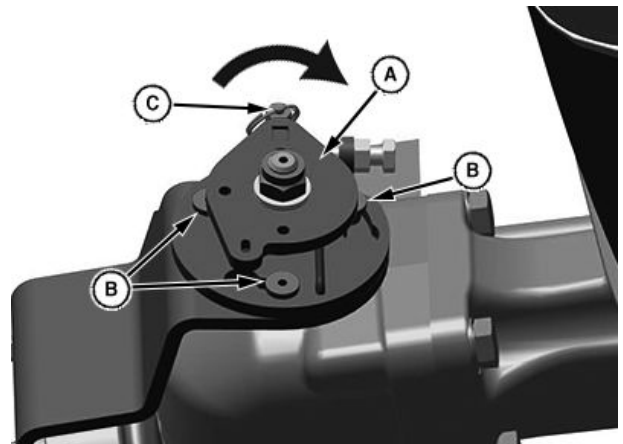
LV24104 —UN—15SEP15

PS75950,00001B9 -19-21AUG17-2/5

*NOTE: Large openings of spring assembly need to fit over shoulder pins (B).*

6. Place right side spring assembly (A) over shoulder pins (B).
7. Lift spring pin (C) and turn spring assembly (A) clockwise to lock assembly.

**A—Spring Assembly - right side**       **C—Spring Pin**  
**B—Shoulder Pin**



LV24317 —UN—14DEC15

PS75950,00001B9 -19-21AUG17-3/5

8. Make sure spring pin (C) is locked in place.

**C—Spring Pin**



LV24320 —UN—14DEC15

Continued on next page

PS75950,00001B9 -19-21AUG17-4/5

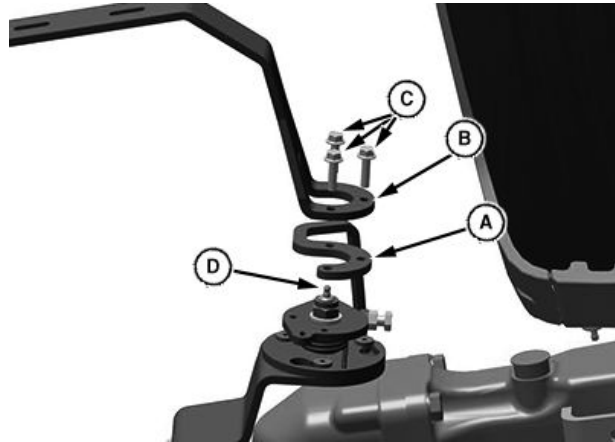
9. Apply Loctite® 243 to Flanged Cap Screws (C).
10. Use three M8 x 1.25 x 30 cap screws (C) to assemble front fender back stop (A) and fender bracket (B) to spring assembly. Tighten to specification.

**Specification**

Flanged Cap Screw, M8 x 1.25 x 30 (C).—Torque.....25 N·m  
18 lb.-ft.

11. Install grease fitting (D) into top of spring assembly.

- |  |  |
|--|--|
| <b>A—Front Fender Back Stop - right side</b> | <b>C—Flanged Cap Screw, M8 x 1.25 x 30</b> |
| <b>B—Fender Bracket</b>                      | <b>D—Grease Fitting</b>                    |



LV24318 —UN—11DEC15

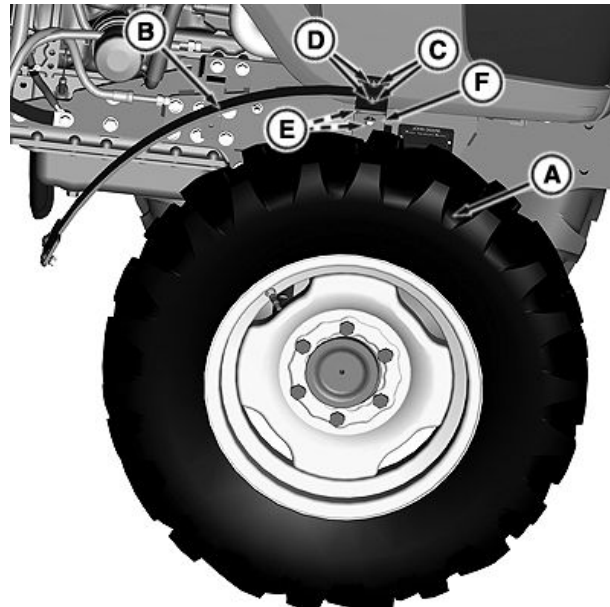
Loctite is a trademark of Henkel Corporation

PS75950,00001B9 -19-21AUG17-5/5

**Install Fender**

1. Reinstall right side wheel assembly (A).
2. Assemble support bracket (B) on fender bracket (F) with two socket head button screws M8 x 1.25 x 20 (C), two flat washers I.D. - M8.4 x O.D. - M24 x 2 (D) and two flange nuts M8 x 1.25 (E).

- |   |  |
|---|--|
| <b>A—Wheel Assembly - Right Side</b>              | <b>D—Flat Washer, I.D. - M8.4 x O.D. - M24 x 2</b> |
| <b>B—Fender Support Bracket</b>                   | <b>E—Flange Nut, M8 x 1.25</b>                     |
| <b>C—Socket Head Button Screw, M8 x 1.25 x 30</b> | <b>F—Fender Bracket</b>                            |



LV24108 —UN—18SEP15

Continued on next page

PS75950,00001BA -19-21AUG17-1/3

3. Place fender (A) on top of fender support bracket and position to desired tire coverage.
4. Mark upper and lower mounting holes (B and C).
5. Remove fender and drill four 8 mm holes.

**A—Fender**                                      **C—Lower Mounting Holes**  
**B—Upper Mounting Holes**



LV24110 —UN—18SEP15

PS75950,00001BA -19-21AUG17-2/3

6. Remove top socket head button screws (F), flat washers (D) and flange nuts (E) to attach front fender (A) on top end.
7. Apply Loctite® 243 to socket head button screws (C and F).
8. Attach bottom end of fender (A) with two socket head button screws M8 x 1.25 x 20 (C), flat washers I.D. - M8.4 x O.D. - M24 x 2 (D) and flange nuts M8 x 1.25 (E). Tighten both (C and F) to specification.

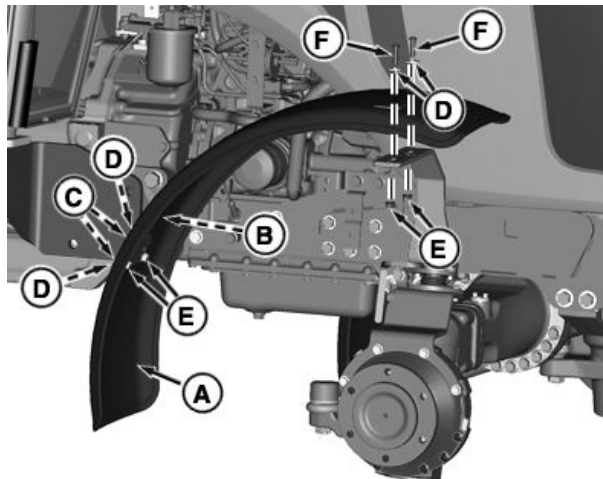
**Specification**

Socket head button screws (C and F)—Torque.....	25 N·m 18 lb.-ft.
---	----------------------

9. Grease pivot fitting prior to use and after every 250 hrs.
10. Repeat procedure for left side of tractor.

**A—Front Fender**                                      **D—Flat Washer, I.D. - M8.4 x**  
**B—Fender Support Bracket**                      **O.D. - M24 x 2**  
**C—Socket Head Button Screw,**                **E—Flange Nut, M8 x 1.25**  
**M8 x 1.25 x 20**                                      **F—Socket Head Button Screw,**  
**M8 x 1.25 x 30**

*Loctite is a trademark of Henkel Corporation*



LV24108 —UN—16SEP15

PS75950,00001BA -19-21AUG17-3/3

